

Visit MEAttraining.com for computer class details

Download complete Wall Calendar from Website

1989

Classroom Classes

2009

On-Line Classes



"We consolidate some of what we learn from our Live Tech Support Hot Line and some of our Real World on-the-job training, Tech Van Fixes, into each MEA Class – On-Line and Classroom"

MEA Technical Training Director

Dave Scaler

MEA Office: 908-496-0059

MEA also offers ALL NJ State ETEP & DMV Classes

August Class Calendar

All Conventional Classes are at the Maplewood Location unless otherwise indicated

Monday	Tuesday	Wednesday	Thursday
3 Call to Register For ALL Classes Internet and Conventional (973) 426-9001	4 MEA is Going Paperless Get on the E-mail List	5 <u>Lunchtime Internet Class</u> Today 12:00 ó 12:30 OTC AND Snap-On Scanner How To Get Mode 6 Diagnostics	6 Fundamentals Of Fuel Injection
10 ALL INTERNET CLASSES NO EXTRA COST TO MEA MEMBERS	11 NJ State Specific Rules and Regulations Class For <u>Expiring</u> Emission Repair Techs that DO NOT do inspections	12 <u>Lunchtime Internet Class</u> Today 12:00 ó 12:30 Nissan Fly by Wire And Throttle Relearn	13 CALL FOR NJ INSPECTOR UPDATE CLASSES 973-761-7420
17 <u>Evening Internet Class</u> Tonight 8:00 ó 8:30 VW 1.8 Turbo Diagnosis NEW	18 <u>Evening Internet Class</u> Tonight 8:00 ó 8:30 GM P0401 Diagnosis	19 MEA TRAINING ON YOUR PC Visit www.MEAttraining.com	20 "WHY Doesn't It Start?" No Start Diagnosis Class
24 Dodge Cummins Diesel Testing Techniques Class	25 CALL FOR NJ EMISSION REPAIR UPDATE CLASSES 973-761-7420	26 TPMS The MEA Way! Complete Guide to Tire Pressure Monitoring	27 <u>Evening Internet Class</u> Tonight 8:00 ó 8:30 Infiniti / Nissan EVAP System Diagnosis NEW

**MEA
Members Only
Calendar**

1805 Springfield Avenue Maplewood NJ 07040

August 2009

**CALL To Register
For classes
(973) 426-9001**

Hotline hours are from 9am to 5pm Monday through Friday Classes are from 7pm to

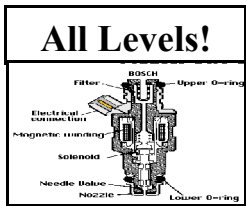


INTERNET

Wed. Aug 5th Lunchtime Internet Class OTC & Snap-On Scanner Mode 6 Diagnostics

Distance Learning – Learn On-Line

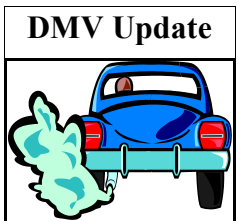
Finding a misfire on a Ford can be a tough task. Often there is no code to identify the misfire, even though you can feel the engine missing. There are also no "misfire counters" that you can watch on your most popular scanners. This course will show you how to use "mode 6" in your scan tool to easily find the misfiring cylinder. If you are not using Mode 6 on Fords to find a misfire, you are working too hard!. Find out how to do this with both an OTC scanner (or MAC Mentor, Matco Determinator) and Snap On Scanner (or Modis, or Solus) in this effective webinar.



All Levels!

Thurs. Aug. 6th Fundamentals of Fuel Injection

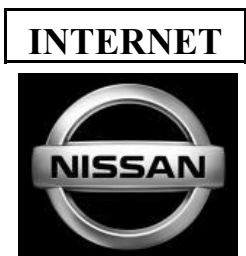
Whether the complaint is a NO Start or a Driveability problem, knowing what's going on in the fuel system is key to your diagnosis. You'll learn how to identify the different systems; TBI, CFI, MFI, and SFI to name a few. Complete testing of all related Inputs. Learn the proper way to do Injector Flow testing as well as pressure testing. What is the difference between Saturated Switch vs Peak and Hold Injectors. Coverage of the NEW Returnless Fuel Sys-



DMV Update

Tues. Aug. 11th NJ State Specific ERT Rules and Regulations

Did you get the letter from DEP that says your repair license is going to expire? If you have a Repair license and need to renew it, you must update it to include the NJ Specific Rules and Regulations Course. Once again MEA is APPROVED to provide this new course, and we have put together a great package to help you get your update training quickly and easily. You will get all the required information Repair Technician, you are required to know the rules and regulations governing the NJ Enhanced Emission testing process. This is a 3 hour course with NO EXAM,

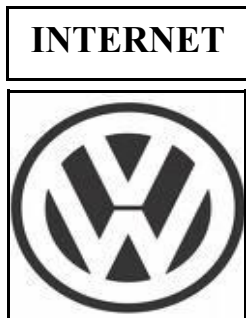


INTERNET

Weds Aug 12th Lunchtime Internet Class Nissan Fly By Wire and Throttle Re-learn

Distance Learning – Learn On-Line

Most newer Nissan vehicles are coming equipped with electronic throttle assemblies. This class will cover operation, and testing of the complete Electronic Throttle Control System. We will cover ETC, APP, TPS, P0507 and relearn procedures. We will cover the dangers of "Cleaning the throttle body".



INTERNET

Mon. Aug. 17th Evening Internet Class VW 1.8 Turbo Diagnosis

Distance Learning – Learn On-Line

This VW Web based training class will cover operation and testing the popular VW 1.8 Turbo Application. Topics covered include Boost Control, Re-Circulation Control, Charge Pressure Bypass Valve, N75 Wastegate Control Solenoids, N249 Recirculation Control Solenoid, and Boost Sensor Testing and Diagnosis and Scan Tool Diagnosis including Measuring Block Scan Data in VW Expert Mode.

INTERNET



Tues. Aug. 18th

Evening Internet Class

Gm P0401

Diagnosis

Distance Learning – Learn On-Line

GM P0401 is the code for Insufficient EGR flow. This code can be one of the most difficult to diagnose because often the code is set, but the EGR "appears" to be working perfectly. This can be even more confusing when dealing with an electronic EGR valve such as the ones used on GM Vortecs. This course will cover operation and testing of the GM linear EGR system, including an exclusive MEA test for clogged EGR ports.

All Levels



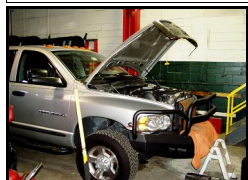
Thurs. Aug. 20th

Why Doesn't it Start??? No Start Diagnos-

tics

When it comes to a "NO Start", we all know there some basic questions we must ask ourselves with every car. Does it have spark and Injector pulse? Is there fuel Pressure? Correct Fuel Pressure!! Is it breathing and do we have all these things at the right time? However, we have also learned that each system has it's common problem areas. COP vs DIS Spark Control. Multipoint vs Sequential Injection. What part does Cam / Crank synchronization play? This class will cover testing and diagnosis of all these areas. We'll include . Crank - No Start, No Crank - No

Diesel Series



Mon. Aug. 24th

Dodge Cummings Diesel Engine Management Systems

24 valve and High Pressure Common Rail applications from 1998 to 2008 will be covered in this course. The common goal is to get to the bottom of all engine performance problems as quickly as possible. Coverage of the following systems in detail will assure us of a fast and accurate diagnosis. Electronically controlled Injection pump, HPCR, PCM controlled Intake Air Heater, Turbo charging, Mechanical and 90-volt injectors. Sensors Including APP, Fuel PSI, and WIF. Diagnosing common connector tube failures, critical sensors and data stream analysis. This MEA course offers techniques and procedures that go above and beyond the books.

All Levels



Wed. Aug. 26th

TPMS Tire Pressure Monitoring Sys-

tems

With the Federal Government requiring EVERY new car having TPMS systems now, this class is a need to know course covering the most popular failures and testing of TPMS systems. Data gathered in this class is derived from Hotline Calls from techs with TPMS problems. This class will cover operation and testing of both Direct and Indirect TPM Systems, including how they work and the different problems associated with them. From accelerometers, to Pulse Modulated RF testing, this class will cover the keys to fixing these systems in a simple practical way, including the "tire pressure hokey pokey" technique. With over 10 TPMS manufacturers, this class simplifies the groups to allow the technician to get to the bottom line faster. Most importantly, learn how to stay out of trouble when servicing these new systems. This class will prepare the technician for troubleshooting as well as resetting

INTERNET



Thurs. Aug. 27th

Evening Internet Class

Infiniti / Nissan EVAP System Diagno-

sis

Distance Learning – Learn On-Line

Infiniti and Nissan share EVAP systems as well as other components. These EVAP systems are often confusing because of the parts used differ from other manufacturers. In this class we will go over all the components, their proper names and their functions as well as how to test them. By the end of this class parts like Purge Cut Valve, Purge Control Solenoid, Purge Volume Control Valve, Vacuum Cut Valve and Canister Vent Control Valve will be easily identified and tested. This is a must attend class if you