

Visit MEAttraining.com for computer class details

Download complete Wall Calendar from Website

1989

Classroom Classes

2009

On-Line Classes



"We consolidate some of what we learn from our Live Tech Support Hot Line and some of our Real World on-the-job training, Tech Van Fixes, into each MEA Class – On-Line and Classroom"





*MEA Technical Training Director
Dave Scaler*

MEA Office: 908-496-0059

MEA also offers ALL NJ State ETEP & DMV Classes

October Class Calendar

All Conventional Classes are at the Maplewood Location unless otherwise indicated

Monday	Tuesday	Wednesday	Thursday NEW
5 Call to Register For ALL Classes Internet and Conventional (973) 426-9001	6 Computer Controlled Charging Systems	7 PREPARE FOR YOUR ASE TESTS WITH US  	8 <u>Evening Internet Class</u> Today 8:00 PM ó 8:30 PM Toyota EVAP Late Model Systems
12 WE ARE YOUR NJ EMISSION RULES and REGULATION INFORMATION SOURCE	13 ALL INTERNET CLASSES NO EXTRA COST TO MEA MEMBERS	14 <u>LUNCH Internet Class</u> Today 12:00 ó 12:30 VW 1.8 Turbo Diagnosis	15 WE NEED DIESEL PARTS! If you have them Please save them for us
19 CALL FOR NJ EMISSION REPAIR UPDATE CLASSES 973-761-7420	20 <u>Evening Internet Class</u> Today 8:00 PM ó 8:30 PM GM Duramax Diesel Injector Testing	21  ASE A-9 Light Duty Diesel PREP NEW	22 MEA TRAINING ON YOUR PC Visit www.MEAttraining.com
26 Top 5 Problems 6 Import Brands Jaguar, Kia, Saab, Suzuki Land Rover and Mazda	27 NJ State Specific Rules and Regulations Class For Expiring Emission Repair Techs That DO NOT do Inspections	28 ASE A-6  Electrical PREP	29 MEA is Going Paperless Get on the E-mail List

**MEA
Members Only
Calendar**

1805 Springfield Avenue Maplewood NJ 07040

October 2009

**CALL To Register
For classes
(973) 426-9001**

Hotline hours are from 9am to 5pm Monday through Friday Classes are from 7pm to


ADVANCED



Tues. Oct. 6th **NEW!!** **Computer Controlled Charging**

In this class we will cover Charging Systems Controlled by the PCM, BCM, DIM, IPC and other computers. Chrysler, Ford, GM and Honda currently have these systems and more manufacturers are installing these systems. We will cover operation and testing of current sensors and battery temp sensors. Electrical Power Management coverage, including different modes of operation such as Charge mode, Fuel Economy mode and Load Shedding. Also covered will be RVC, SARVC, Gen Com, Gen Mon, ELD, and

INTERNET




Thurs. Oct. 8th **Evening Internet Class** **Toyota EVAP – Late Model Systems**

Distance Learning – Learn On-Line

Toyota EVAP is one of the highest evap system calls on our hotline. To understand how to fix Toyota EVAP systems, you must understand how the system works. Toyota systems are designed to find leaks and turn on the Check Engine for the EVAP system with a hole as small as .020. We will cover the 2001 and newer Toyota LATE system. System coverage will include EVAP VSV, Canister Closed VSV, and BY-Pass VSV testing. Complete diagnosis of the most popular EVAP codes PO440, PO441, and P0446.

INTERNET




Weds. Oct 14th **Lunchtime Internet Class** **VW 1.8 Turbo Diagnosis**

Distance Learning – Learn On-Line

This VW Web based training class will cover operation and testing the popular VW 1.8 Turbo Application. Topics covered include Boost Control, Re-Circulation Control, Charge Pressure Bypass Valve, N75 Wastegate Control Solenoids, N249 Recirculation Control Solenoid, and Boost Sensor Testing and Diagnosis and Scan Tool Diagnosis including Measuring Block Scan Data in VW Expert Mode.

INTERNET



Tues. Oct 20th **Evening Internet Class** **GM Duramax Diesel – Injector Failure Diagnosis**

Distance Learning – Learn On-Line

One of the most common failures for driveability problems on these engines, are the high voltage injectors. The most common complaint is the vehicle runs with a mis-fire. Unlike gas engine applications, most of the time there are known codes on Diesels to help you ID what cylinder is the problem. Properly diagnosing the problems associated with injector failures can be made easier by attending this MEA webinar. 1st and 2nd generation types will be covered. 92 volt and 48 volt description and operation. How to interpret **balancing rates** with your scanner to come up with a quick diagnosis. .Bi-directional output control for power balance testing will also be included.

MEA Members Only Calendar

October 2009

CALL To Register
For classes
(973) 426-9001

1805 Springfield Avenue Maplewood NJ 07040

Hotline hours are from 9am to 5pm Monday through Friday

Classes are from 7pm to 10pm

ASE PREP



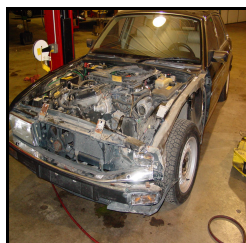
Weds. Oct. 21st

ASE A-9 PREP – Light Duty Diesel

sel

New to the MEA ASE Test Prep series is the A-9, Light Duty Diesel Class. We will cover Diesel engine design and machining, mechanical and electronic diagnosis. Common rail systems theory and operation. There will also be extensive coverage of the turbo VGT systems and intake system diagnosis. Complete electronic engine management including all sensors and actuators. We will also spend time covering Diesel injectors including testing, operation and diagnosis. If you have been shying away from this test because you are a %Gas Guy+, this Prep class is for you!!

Import Series



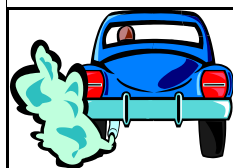
Monday Oct. 26th

TOP 5 Problems with 6 IMPORT

Brands!!!!!!

Once again we have added to the list of courses that ONLY MEA can provide. This time we have added yet more IMPORT Cars to our Arsenal of courses. This class covers Imports that are NOT covered in any other class. Jaguar, KIA, Land Rover, Mazda, SAAB, and Suzuki are all cars with great opportunities for easy fixes if you know what they are. Often a shop will send these cars away without realizing repair potential. This class will cover the 5 most common driveability problems with each of these vehicles and how to test them. Knowing what to look for on these vehicles and how to test them will make your job much easier. As always techniques and images used in this class are impossible to cover in any detail over the hotline, so attendance is a must to understand how these systems work! PLEASE call to register as this is a Popular Class and it tends to fill quickly!

DMV Update

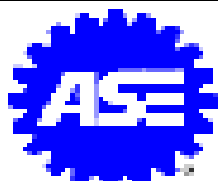


Tues. Oct 27th

NJ State Specific ERT Rules and Regulations

Did you get the letter from DEP that says your repair license is going to expire? If you have a Repair license and need to renew it, you must update it to include the NJ Specific Rules and Regulations Course. Once again MEA is APPROVED to provide this new course, and we have put together a great package to help you get your update training quickly and easily. You will get all the required information Repair Technician, you are required to know the rules and regulations governing the NJ Enhanced Emission testing process. This is a 3 hour course with NO EXAM, CALL for an application!!!! **NOTE: YOU DO NOT NEED THIS COURSE IF YOU HAVE AN INSPECTOR LICENSE!**

ASE PREP



Weds. Oct. 28th

ASE A-6 PREP – Electrical

cal

This ASE Prep Class is designed to prepare you for the A-6 Electrical test. You will get general electrical theory including the key to understanding any electrical system. Ohms Law. The relationship of Amps to Ohms to volts is the core of any electrical diagnosis. We will also cover reading schematics, including symbols and recognizing and diagnosing circuit failures through voltage drop testing. You'll get load testing techniques for components such as wiper motors, lights and relays. Lastly we will include theory, operation and testing of batteries, starters and Charging systems.